



3B Scientific
MEDICAL **NEW PRODUCTS GUIDE**

3bscientific.com
...going one step further

*Skeletons
Muscular Figure*

*Gynecological-Training
Pathological Eye*

*Ear Examination
ORTHObones™*



New products with a new look!

Dear Customer,

On the following pages you will find products from the anatomy range, simulators, and for the first time ORTHObones™, all for training and medical engineering.

Amongst them, there are some recently developed products, which come up to the usual tried and tested 3B Scientific quality standards. The publication of this brochure marks the availability of these products. Inspired by close collaboration with our customers and backed up by recognised specialists, we have come up with teaching and training tools of extraordinary value in our development laboratory. Our classic products have also benefited! The entire skeleton series and our muscle figures now come on a new and improved, high-quality, stable metal stand with 5 castors.

Our products are all developed and made in Germany and produced in line with German quality standards.

For more information about all of our products, and to watch our product videos, go to our website: www.3bscientific.com

We look forward to hearing from you!

Miles Spratt
Vice President, Medical



The Benefits To You

- Wide Product Range**
We offer a huge range of anatomy products and medical simulators
- Quality**
We offer products of the highest quality.
- Customer service**
We enjoy taking care of your interests and our products.

Legend

- Download**
You can download product descriptions from our website
- Natural Size**
- Special Offer Products**
For these products you will receive a 15% introductory discount.

Quality Standards



At 3B Scientific, you will get good quality at fair prices. Our quality management is of a very high standard and meets ISO 9001:2008 standards. It complies with the Worlddidac Quality Charter and is regularly checked by independent experts. **You can count on that.**

Male Pelvis Skeleton, H21/1



3 Part Male Pelvis

This 3 part model is a natural cast of a male, bone pelvis. It shows all anatomical structures in detail: both hip bones, pubic symphysis, sacrum and coccyx as well as the fifth lumbar vertebra with intervertebral disc. A median section has been placed through the fifth lumbar vertebra, the sacrum and the coccyx, so that the pelvis, which is held together by practical magnets, can be separated into two halves.

This means that part of the cauda equina is also visible in the vertebral canal. The left half of the fifth lumbar vertebra is held together by magnets and can also be removed.

H21/1

Male Pelvis with Genitals, H21/3



Male Pelvis with Ligaments, Vessels, Nerves, Pelvic Floor and Organs, 7 Part

This 7 part model of the male pelvis shows in accurate detail how the bones, ligaments, vessels and nerves as well as the pelvic floor muscles and the external sex organs are connected to each other. It shows the whole pelvis, through which a median section has been placed.

The model shows the following bones and ligaments: both hip bones, pubic symphysis, sacrum and coccyx as well as the fifth lumbar vertebra with intervertebral disc. A median section has been placed through the fifth lumbar vertebra, the sacrum and the coccyx, so that the pelvis can be separated into two halves. This means that part of the cauda equina is also visible in the vertebral canal. The left half of the fifth lumbar vertebra can be removed.

H21/3

Male Pelvis with Ligaments, H21/2

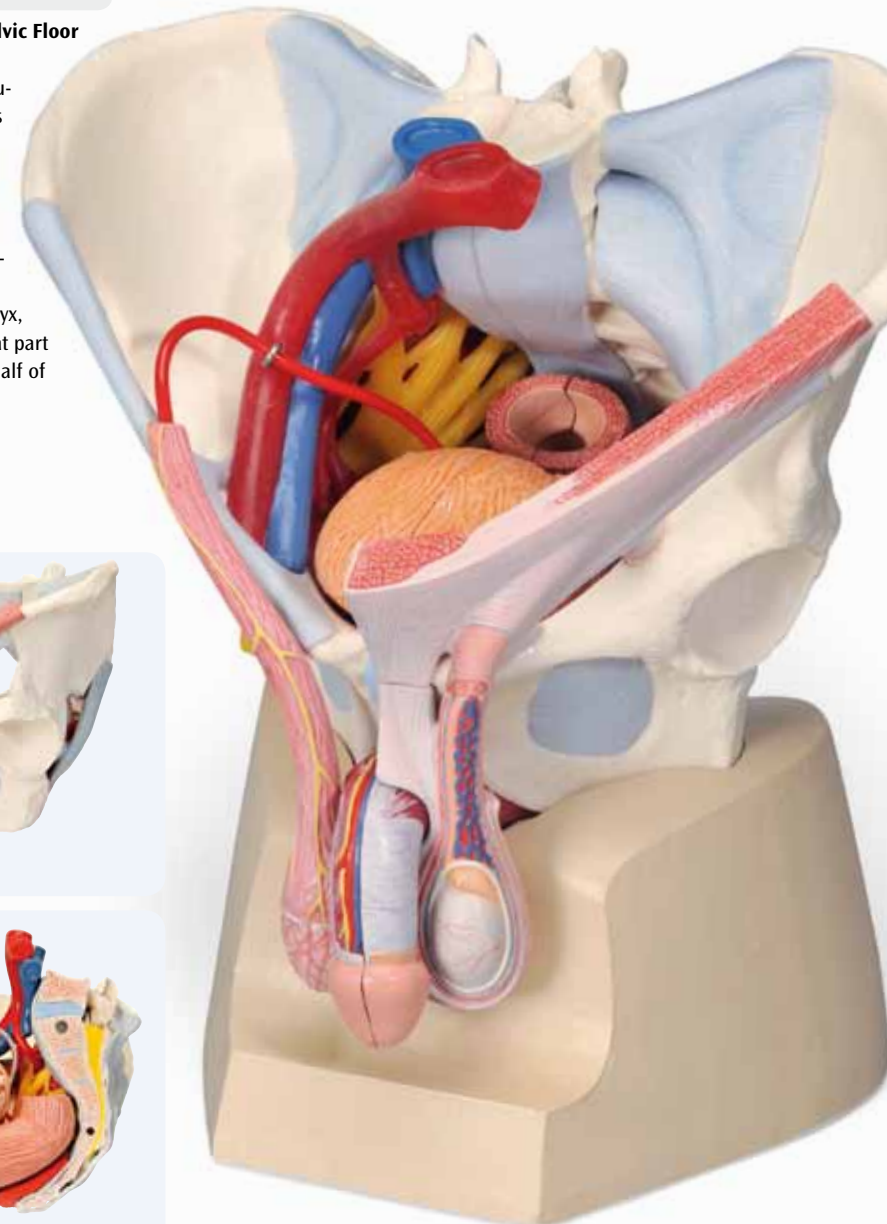


Male Pelvis with Ligaments, 2 Part

This 2 part model is a natural cast of a male, bone pelvis. It shows all anatomical structures in detail: both hip bones, pubic symphysis, sacrum and coccyx as well as the fifth lumbar vertebra with intervertebral disc. A median section has been placed through the fifth lumbar vertebra, the sacrum and the coccyx, so that the pelvis, which is connected by practical magnets, can be separated easily into two halves.

This means that part of the cauda equina is also visible in the vertebral canal. The model shows the following pelvis ligaments: Lig. inguinale, Lig. sacrotuberale, Lig. sacrospinale, Ligg. sacroiliaca anteriora, Lig. iliolumbale, Lig. longitudinale anterius, Lig. Supraspinale, Lig. sacroiliacum interosseum, Lig. sacroiliacum posterius, Lig. sacrococcygeum laterale, Lig. sacrococcygeum posterius superficiale et profundum, Membrana obturatoria and Lig. lacunare.

H21/2





Gynaecological Training P53



Model for Gynaecological Patient Education

This unique gynaecological training model is ideal for demonstration purposes and for realistic insertion of female barrier contraceptive devices, which are placed in the vaginal/cervical area. These include the femidom, FemCap (cervical cap), vaginal ring and diaphragm. The second important function of this simulator is that it is possible to insert the various types of pessaries such as ring, bowl or cube which are used in the event of a prolapse or incontinence. It is also possible to demonstrate how to introduce a IUD (coil) and show where it should be located. The cervical cap can be detected with ultrasound and it is also possible to practice intrauterine insemination (IUI). The transparent vaginal wall allows a view of the inside of the vagina and because the uterus is partially opened up it can be clearly seen how the various devices are inserted. and therefore how they work is shown. Correct positioning and insertion can be demonstrated and then checked in a teaching scenario, the trainee quickly gains confidence in using the various aids due to a clear representation and simple self-check. This is a very simplified representation of the female pelvis and the female genitalia.



P53

Eye Pathological, F17



Pathological Eye - Enlarged 5 Times

This model shows an eye enlarged by a factor of 5, which may be used for patient education. The easy to use switchable and didactically simplified representations of the retina and lens, make it possible to explain clearly to the patient the typical changes that occur in a healthy eye due to the following diseases:

- Subcapsular cataract
- Cortical cataract
- Nuclear cataract
- Diabetic retinopathy
- Hypertensive retinopathy
- Papillary changes of glaucoma
- Age-related macular degeneration
- Papilloedema
- Central retinal arterial occlusion
- Central retinal venous occlusion
- Rhegmatogenous retinal detachment



F17



Accessory-Set:

Pessary kit

XP53-002

Contraception kit

XP53-001

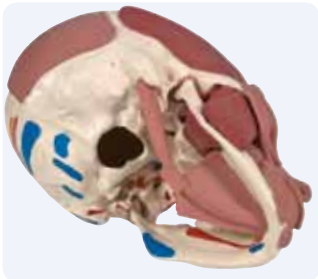
Skull with Muscles A300



Skull with Facial Muscles

The facial and mastication muscles are illustrated on the right half of this skull model. The face musculature can easily and precisely be differentiated from the mastication musculature by the use of two colours. On the left half the muscle origins and insertions are marked with colours (origin: red, insertion: blue). The jaw is movable and due to the flexible musculature a rudimentary chewing motion can be demonstrated. Cranium and m. masseter are detachable.

A300



Lung Segmented G70



Segmented Lung

This high quality Segmented Lung Model shows the lungs with representation of the bronchial tree close to the heart, trachea, oesophagus and aorta.

The Lung is detachable into two lobes and single segments. The segments are colour coded and their position can be easily identified in the bronchial tree. The bronchial tree contains the lobar bronchi and segmental bronchi.

All segments are connected by magnets which allow a safe and easy handling of this very high quality didactic model.

G70





Now available on a stable metal stand with 5 castors!

Skeleton Stan A10

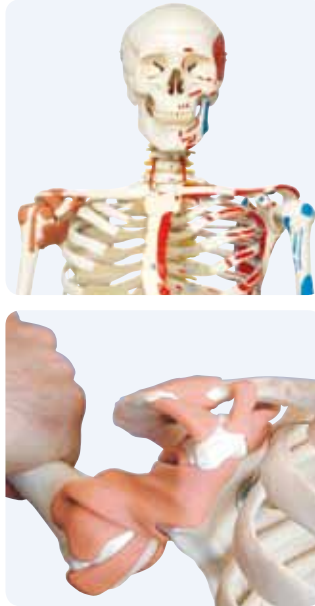


Skeleton Stan A10 on Metal Stand with 5 Castors

Proven Quality - even more stable! Stan, the standard model of a human skeleton, has been appreciated throughout the world for decades. Thanks to its very high quality and robust construction, it is perfect for use in hospitals, schools, universities and laboratories. So choose Stan, the original among artificial skeletons.

A10

Skeleton Sam A13



Skeleton Sam A13 - Luxury Version

Sam offers all the advantages of a 3B Scientific® skeleton. With Sam, you can also demonstrate the movements of the skull via the head joints, and thanks to the fully flexible spine, you can adjust the model to place it in natural body postures. The unique combination of muscle origins and insertions, the numbered bones, flexible ligaments and flexible spine with a slipped disc between the 3rd and 4th lumbar vertebrae clearly show medical and anatomical interest of this top model's more than 600 structures.

A13

Skeleton Fred A15



Skeleton Fred A15, the Flexible Skeleton

Fred offers all the advantages of a 3B Scientific® skeleton. Fred's bendy spine can copy almost any human movement too. Once bent, Fred will remain in that position, to show correct and incorrect postures as well as any pathological malalignments. All skull movements can be shown on the head joints. Protruding spinal nerves and vertebral arteries are also shown on this skeleton, as well as a dorsolateral slipped disc between the 3rd and 4th lumbar vertebrae.

A15

The other advantages of the 3B Scientific® skeleton are:

- Exceptional value for money
 - 3 year guarantee
 - Top quality natural casting made in Germany
 - Final assembly done by hand
 - Made from a durable, unbreakable synthetic material
 - On a stable metal stand with 5 castors (painted white)
 - Close to the realistic weight of around 200 bones
 - Natural skeleton size
 - 3 part assembled skull
 - Individually inserted teeth
 - Limbs can be removed quickly and easily
- Supplied with metal stand and transparent dust cover

You will find the entire skeleton range on our website and in the summary table >>>

Metal Stand with 5 Castors

This metal stand base features extraordinary stability and durability. The 5 large castors ensure that the stand is stable and easy to handle. The base is compatible with all 3B skeletons and the 3B muscle figures B50 and B51. Make sure you have a secure stand for your current skeleton and upgrade to this metal stand base easily and quickly.

XA031



Overview of all Skeleton Models and Their Features

Model	A10	A10/1	A11	A11/1	A12	A13	A13/1	A15	A15/3	A15/3S
Top quality natural casting	•	•	•	•	•	•	•	•	•	•
Final assembly done by hand	•	•	•	•	•	•	•	•	•	•
Durable, unbreakable synthetic material	•	•	•	•	•	•	•	•	•	•
Natural skeleton size	•	•	•	•	•	•	•	•	•	•
Close to the actual weight of approx. 200 bones	•	•	•	•	•	•	•	•	•	•
3 part skull that can be taken apart	•	•	•	•	•	•	•	•	•	•
Rotating ulna and radius	•	•	•	•	•	•	•	•	•	•
Soft intervertebral discs	•	•	•	•	•	•	•	•	•	•
Metal stand with 5 castors	•		•		•	•		•		
Metal hanging stand with 5 castors		•		•			•		•	•
L3-L4 slipped disc						•	•	•		
Flexible spine						•	•	•		
Muscle insertions and origins, hand-painted			•	•		•	•			
Flexible ligaments					•	•	•			
Spinal nerves and vessels						•	•	•		
Numbered bones, fissures, foramina and processes			•	•		•	•			
Flexible assembly of all large joints									•	•
Natural movement of the shoulder and shoulder blades										•
Natural movement of the knee cap										•
Almost natural movement of the hip									•	•
Flexible assembly of the foot bones									•	
Flexible assembly of the xiphoid process									•	•



Dual Sex Muscle Figure B50



The finest teaching tool available! Standing over 138 cm tall, this ¾ life size human replica depicts deep and superficial musculature as well as the body's major nerves, vessels, tissues and organs in exquisite detail. The internal organs are removable (45 pieces in all) to reveal the fundamental inter-relationships of human morphology. Remove the calvarium to view the 3-part removable brain. Look beneath the liver to reveal the gall bladder and bile duct. Peer inside the appendix, stomach, lungs, heart or kidney. Remove and view the details of 13 different muscles of the arms and legs. This dual sex version has interchangeable genital inserts and a female mammary gland as well as a detailed multilingual key card identifying over 600 hand numbered structures. Hand painted in realistic colours and mounted on a convenient roller base. Includes the following features:

- 5 arm/shoulder muscles
- 8 leg/hip muscles
- 2 part removable heart
- 5 part head including removable brain
- 2 part removable lungs
- 2 part stomach
- Removable 4 part male and 2 part female genital inserts
- Detachable arms, leg, and abdominal wall for detailed study

B50

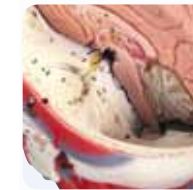
Female Muscle Figure B51

This female muscle figure without internal organs, brain and male genital inserts provides the same quality characteristics as the model B50. This model consists of 23 parts, including 13 arm/leg muscles. Remove the calvarium to view the 3-part removable brain. Hand painted in realistic colours and mounted on a convenient roller base, there is simply no finer reproduction available!

Includes the following features:

- 5 arm/shoulder muscles
- 8 leg/hip muscles
- Detachable arms, leg, head and abdominal wall for detailed study

B51



Now on a stable metal stand with 5 castors!

AirSim Standard



AirSim Standard Model
The AirSim Standard is uniquely constructed to allow realistic feedback during airway management procedures and provides true, anatomically correct and visually accurate internal features.

The novel neck construction allows the head to be moved and secured in a number of positions, ranging from the standard “sniffing” position to more difficult scenarios.

The AirSim Standard also features an inflatable tongue with real-life size and texture. There is also an option to include “breakout” teeth to simulate the effects of bad practice in laryngoscopy (see W47401T and W47401N).

The AirSim Standard is ideal for training in the use of:

- Laryngeal Masks
- Full range of supraglottic devices
- Laryngoscopes
- Tracheal Tubes
- Fiberoptic Laryngoscopes
- Needle Cricothyroidotomy Systems

AirSim Standard Model

W47401

AirSim Standard Model with Breakout Incisor Teeth

W47401T

AirSim Standard Model with Needle Access for PDT

W47401N

AirSim Standard Model with Breakout Incisor Teeth and Needle Access for PDT

W47401TN

AirSim Multi



AirSim Multi Model with Nasal Passage
The AirSim Multi contains the key features of the AirSim Standard (W47401) with the addition of a nasal passage and a chin.

The AirSim Multi facilitates training on nasal procedures as well as bag and mask ventilation techniques.

The nasal passage has been developed in a manner similar to the main

airway. This gives the same anatomical realism and functionality, important landmarks such as the turbinates are clearly defined. In addition, the material used offers the same tactile feedback which is delivered with the main airway itself. There is also an option to include “breakout” teeth to simulate the effects of bad practice in laryngoscopy (see W47402T and W47402TN2).

These features allow AirSim Multi to be used for training and practice in nasotracheal intubation and nasally directed fiberoptic examination.

The AirSim Multi can be used in the training of all the procedures facilitated by the AirSim Standard (W47401) with the addition of:

- Naso-tracheal intubation
- Awake fiberoptic examination
- Bag & mask ventilation techniques

AirSim Multi Model with Nasal Passage

W47402

AirSim Multi Model with Nasal Passage and Breakout Incisor Teeth

W47402T

AirSim Multi Model with Nasal Passage and Needle Access for PDT

W47402N

AirSim Multi Model with Nasal Passage, Breakout Incisor Teeth and Needle Access for PDT

W47402TN

AirSim Bronchi



AirSim Bronchi Model with Nasal Passage
The AirSim Bronchi is the latest product addition to the AirSim family, providing anatomically correct detail down to the fourth generation bronchi.

The AirSim Bronchi provides exceptional detail in both internal and external features; made possible through a combination of cutting edge moulding technology and carefully handcrafted processes.

The AirSim Bronchi unit will provide a solution to your training needs in:

- Diagnostic bronchoscopy
- Lung isolation techniques using left and right endobronchial tubes and bronchial blockers
- Lung suctioning techniques
- For clinicians and industrial clients, the AirSim Bronchi is a leading choice for demonstration of items such as:

Fiberoptic bronchoscopic equipment
Single and double lumen tubes and bronchial blockers
Specialised bronchial stents

AirSim Bronchi Model with Nasal Passage

W47403

AirSim Bronchi Model with Nasal Passage and Breakout Incisor Teeth

W47403T

AirSim Bronchi Model with Nasal Passage and Needle Access for PDT

W47403N

AirSim Bronchi Model with Nasal Passage, Breakout Incisor Teeth and Needle Access for PDT

W47403TN

AirSim Advanced



The **AirSim Advanced Model** features the uniquely constructed AirSim airway, designed to provide true, anatomically correct and visually accurate internal features.

The addition of a “real-feel” skin covering provides a more realistic bag mask ventilation training experience. AirSim Advanced features an improved neck design allowing for accurate articulation.

AirSim Advanced also features an anatomically accurate nasal passage, inflatable tongue to increase difficulty of airway and an option to include “breakout teeth” (see W47404T and W47404TB) to simulate the effects of bad practice in laryngoscopy.

The AirSim Advanced is ideal for training in:

- Effective bag mask ventilation
- Use of full range of supraglottic devices
- Video and standard laryngoscopy
- Tracheal and naso-tracheal intubation
- Awake fiberoptic examination

AirSim Advanced Model

W47404

AirSim Advanced Model with Breakout Incisor Teeth

W47404T

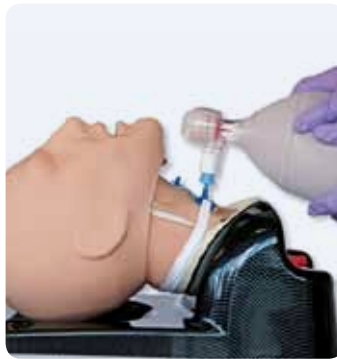
AirSim Advanced Model with Bronchial Tree

W47404B

AirSim Advanced Model with Breakout Incisor Teeth and Bronchial Tree

W47404TB

AirSim Advanced Crico



AirSim Advanced Crico combines all the standard features of the AirSim Advanced product (W47404) with the addition of a simulated cricoid cartilage to facilitate training in both needle and surgical cricothyroidotomy procedures.

AirSim Advanced Crico is the solution for delivery of effective training in a comprehensive range of airway management procedures.

The Advanced Crico features the uniquely constructed AirSim airway designed to provide true, anatomically correct and visually accurate internal features, coupled with a real-feel skin covering.

The AirSim Advanced Crico is ideal for training in:

- Needle/Surgical Cricothyroidotomy
- Awake fiberoptic examination
- Tracheal & naso-tracheal intubation
- Video and standard laryngoscopy - including Sellick Maneuver
- Use of full range and supraglottic devices
- Effective Bag Mask Ventilation

AirSim Advanced Crico Model

W47405

AirSim Advanced Crico Model with Breakout Incisor Teeth

W47405T

AirSim Advanced Crico Model with Bronchial Tree

W47405B

AirSim Advanced Crico Model with Breakout Incisor Teeth and Bronchial Tree

W47405TB

AirSim Baby



True to its heritage, **AirSim Baby** has realistic anatomy and a clinical functionality that enables basic and advanced paediatric airway management.

AirSim Baby facilitates training in the use of bag/mask ventilation, supraglottic airway insertion and both naso and orotracheal intubation. In addition, it can be used with all current videolaryngoscopes.

Realistic airway allows for training in all aspects of infant airway management including positive pressure ventilation, insertion of laryngeal masks and endotracheal intubations (nasal and oral).

Realistic external and internal anatomical features allow for easy and successful demonstration of all paediatric videolaryngoscopes.

Presented on a lightweight but sturdy frame, AirSim Baby comes shipped with its own lungs to demonstrate correct tube placement.

W47406



Intubation Baby



Advanced Infant Intubation Head with Board

This station trainer incorporates new skin technology. The advantages of durability and lifelike appearance, in association with the convenience of a lightweight stand, put this device at the top of the class for pediatric airway training. This new material eliminates tearing of the airway, saving the need for costly repairs caused by students' first intubation attempts. Translucent property allows for lifelike illumination of the airway and neck as the skill is attempted.

Vocal cords are highlighted for easy viewing, the tongue swells, and all the anatomical landmarks are present.

1017236

CPR Baby



CPR Cathy™ Infant Manikin with Electronics

This infant CPR manikin, newborn, can be filled with water to approximate the same weight and "feel" as a real child of corresponding size. Realistic rise and fall of the chest is provided when air enters under the chest overlay. Torso features lifelike rib cage, sternum, xiphoid process, and suprasternal notch to help train effective compression technique. The manikin is ruggedly designed for effective flow through cleaning and sanitising without disassembly. Optional trouble free electronics housed outside of the manikins offer a unique, patented system for monitoring correct performance during CPR training. Sensors activate lights and/or an audio signal to indicate correct lung ventilation, depth of compression, and correct finger or hand placement. Dressed manikin is shipped in a rugged nylon carrying bag with 12 disposable lungs.

W44041

Emergency Simulation Baby



Basic Life/form® Infant CRiSis™ Manikin

This dramatic training manikin is ideal for beginning practice and building skills to work on the more advanced skills of the Life/form® Infant or Deluxe Infant CRiSis™ Manikins. Visual and tactile realism are combined in the simulator to provide students with the most realistic training possible to learn with incredible accuracy. Anatomical landmarks provide key features necessary to learn proper infant care in emergency situations. Manikin can be upgraded to the Life/form® Complete Infant or Deluxe Infant CRi-

Sis™ Manikins by adding the Manikin Modular Component upgrades available. This full body infant manikin was created to offer realistic training and practice of infant airway management and CPR education. Anatomically correct in both size and detail. Landmarks include gum line, tongue, oral and nasal pharynx, larynx, epiglottis, arytenoids, false and true vocal cords, cricoid ring, tracheal rings, trachea, and oesophagus. Also allows practice of intubation, and suction techniques can be performed and evaluated.

W44717

Respiratory Tract Training Baby



Infant Airway Management Trainer

Lifelike airway develops skill proficiency.

Realistic practice is the key to developing proficiency in airway management skills. The Laerdal Airway Management Trainer's lifelike upper torso and head simulates real world complication when practising a variety of intubation, ventilation, and suction techniques. Realistic anatomical features allow demonstration of the Sellick Manoeuvre and laryngospasm.

Practical training in clearing an obstructed airway and suctioning of liquid foreign mat-

ter. Provides visual inspection of lung expansion and auscultation of breath sounds. Simulates stomach inflation and vomiting situation. Airway Demonstration Model is standard with each trainer. Can be used with Trachlight products. Improved airway allows insertion of laryngeal mask airway and combi-tube.

W19521

Lumbar Puncture Paediatric



Life/form® Paediatric Lumbar Puncture Simulator

This Life/form® Paediatric Lumbar Puncture Simulator represents a 10-12 month old infant placed in a left lateral decubitus position with the neck and knees flexed, approximating the necessary foetal position. The embedded iliac crest offers exceptional realism, while removable spine, spinal canal and skin pad make training simple and hassle free. Lumbar puncture

may be performed in the L3-L4, L4-L5, or L5-S1 spaces. The correct site can be located by palpating the ilia crest and spine. A small „give“ will be felt as the spinal needle is advanced slowly into the proper space. Fluid will flow when the needle is in proper position. Students will appreciate the opportunity to practice this delicate but commonly preformed procedure on a simulator that is both appealing and anatomically accurate.

W44781

Heart and Lung Sounds Paediatric



Child Heart & Lungs Sound Trainer

This self-contained heart and lung sound generator delivers site-specific heart and lung sounds typical of a four year old child. Use any stethoscope in the normal auscultation site for paediatric assessment to listen as the lung and heart speakers mimic actual sounds. The unit can be run from either a conventional PC using your mouse and monitor, or through the special handheld remote. An external speaker jack allows you to broadcast sounds to the entire classroom, or you can use it for audible testing of more than one student at a time. Classroom broadcasts of speakers/sounds in specific locations allow students to hear precise sound anomalies encountered when they auscultate

the manikin. No programming required. Simply plug in, attach your USB mouse and monitor cable, and point and click your way to student excellence in lung and heart sound knowledge.

W44744

Heart Catheterisation



Heart Catherisation Simulator

Now you can train residents and staff in the techniques of performing central venous catheterisation using the TPN Simulator. All appropriate landmarks are palpable for realistic identification of insertion sites. Synthetic skin may be removed from the shoulder to reveal dissected musculature

and location of veins, arteries, and other landmarks. With the skin in place, you can actually insert the needle introducer. The tactile sensation is amazingly realistic. Artificial blood is connected to provide confirmation of proper needle location when “blood” flows from the needle, just like the real thing! Venous catheters can be snaked into place once the introducer is properly inserted. Use of a Swan-Ganz catheter is possible. Skin and veins will stand up to repeated puncture to allow training by dozens of staff members. The skin and veins are easily replaced once worn. Also practise proper care of the puncture site and parenteral administration of fluids. Practise measuring central venous pressure. Bandaging techniques can be practised with no fear of infection or other harm to a patient. In emergency medical training programs, practise delivery of large volumes of fluids in trauma. Inject for swift action as required for cardiac life support procedures. Includes fluid supply bags, replaceable skin, tubing sealant, needles, one quart of blood, and teaching guide in a hard carry case

1017260

ECG Training

ECG Training Vest

ECG arrhythmia recognition exercises are usually performed on a manikin or by attaching the monitor directly to an ECG Simulator. The new Simulaids ECG Training Vest offers an inexpensive way to communicate with a live patient while monitoring. There is no need to use a high fidelity simulator; the volunteer wears this vest. The vest is manufactured from a flesh coloured fabric with four-lead monitoring capability. The vest can be hooked up to the ECG Simulator that resides in a pocket designed to hold the simulator. The patient or the instructor has access to the rhythm control buttons. This access allows them to select the next rhythm to be practiced. The ECG Training Vest includes the interactive ECG Simulator. The vest contains no electrical energy and is not for defibrillation practice.

1017249



Vasectomy



No Scalpel Vasectomy (NSV) Model

A compact simulator developed to assist in learning a new method of vas occlusion. To provide realism, the leg stumps are designed to “get in the way” of the student as the procedure is mastered. Includes two removable scrotal skins and two testicles, two long vas assemblies that can be advanced as needed for NSV exercises, and instructions for use.

1017240

Circumcision



Circumcision Training Kit

These Circumcision Trainers have been developed with the assistance of one of the top medical schools in Wisconsin, USA, as well as medical professionals in South Africa and Indonesia. The trainers include the foreskin, glans penis, frenulum, meatus, and coronal groove. They are made with soft, lifelike material, which is pliable, delicate, and realistic to the touch. Medical students, physicians, and other practitioners can learn, practise, and improve realistic, hands-on skills for this delicate procedure without the worry of learning on a live patient. Practise simulating dorsal block injection, separating the inner lining of the foreskin (preputial epithelium) from its attachment to the glans, surgical removal of the foreskin, and suturing techniques. These trainers may also be used to demonstrate the procedure and practise aftercare skills with family members. Since there are different methods of circumcision, the Circumcision Trainers have been designed for Mogen clamp method, Guillotine clamp method, Gomco clamp method, Plastibell method, dorsal slit method, forceps guided method, and sleeve circumcision.

Infant Circumcision Training Kit

1017254

Pre-Teen Circumcision Training Kit

1017255

Teen Circumcision Training Kit

1017256

Young Adult Circumcision Trainer Kit

1017257



Catheterisation Male / Female



Transparent Models for Catheterisation

Developed as a learning tool for both male and female catheter simulation and anatomical study, these transparent models allow viewing and practise of the proper insertion, position, and inflation of a balloon catheter.

When practising catheter insertion, you will experience resistance and pressure as you would with an actual patient. The inside of the bladder is observable. Urine (water) flows when catheter is inserted properly. For added

realism, external genitalia is made of a special soft material to simulate real tissue. Supplied with irrigator, irrigator stand, and case.

Transparent Male Catheter Model

1017241

Transparent Female Catheter Model

1017242

Catheterisation Male / Female



Male and Female Catheterisation Trainer

Practise male and female urinary catheterisation on these newly designed anatomically correct models. Training is enhanced by a new material that has a realistic feel and flexibility. The model utilizes a 16 FR catheter and can be used to demonstrate balloon inflation procedures. A fluid reservoir allows for urine output upon successful completion of the insertion procedure. Instructors are able to teach sterile technique and insertion and removal of catheter, as well as practise preparing the patient for the procedure.

Male & Female Catheterisation Trainers Model Set

W44789SET

Male Catheterisation Trainer

W44789M

Female Catheterisation Trainer

W44789F

Cervical Diseases



Cervical Replica

This desktop cervical model is an excellent patient education tool for physicians and health care providers.

Through the use of the cervical model the following cervical pathologies can be studied:

- Cervical Erosion
- Cervix with Linear Laceration
- Cervix with Polyp
- Cervix with Inflamed Nabothian Cyst
- Cervix with Acute Purulent Cervicitis
- Cervix with Carcinoma

Mounted on smoked lucite stand.

Instruction Manual Included

W45078

Breast Examination



Life/form® Advanced Breast Exam Simulator

The Life/form® Advanced Breast Exam Simulator offers unparalleled realism for teaching both clinical and self-breast examination. Unlike other simulators, tissue density actually varies within the simulated breast, just as it does in a live patient. Tumours of varying sizes (1-4 cm diameter), shapes (round, oval, irregular/stellate), and densities can be inserted by the instructor for an expanded combination of training scenarios.

Tumours represent adenomas, cysts, malignant tumours, and enlarged lymph nodes. The trainer features palpable ribs, sternum and clavicles, and enlarged lymph nodes in the axillary and subclavicular areas. Peau d'orange ("orange peel skin") with inflammations, inverted nipple, skin dimpling and asymmetry are also depicted on the incredibly realistic skin. The Life/form® Advanced Breast

Exam Simulator has been designed for supine examination, but may also be used standing upright if desired. Training may also be done without the overlay skin.

W44787

Foetal Monitoring



Internal Foetal Monitor Trainer

This lifelike 3D trainer provides realistic simulation for proper insertion of an internal electrode for foetal heart monitoring. This three-dimensional model includes the foetal head, lower uterine segment, and cervix made from lifelike materials. The foetal model is encased in a durable plastic case which allows for easy visualisation of parts. The foetal head can also be removed to practise foetal spiral electrode application while visualising the procedure. Also includes one model of cervical dilatation depicting 4 cm of dilatation. All parts are easily removed for washing. Includes lubricant, instructions, and nylon carry case.

1017263

Breast Examination



Clinical Breast Trainer

This Trainer combines modularity and practicality for clinical skills in diagnosis and palpation.

- Five identifiable anatomical anomalies.
- Fluid filled cyst for aspiration and palpation
- 2 palpable lumps (approx. 1 cm and 1.5cm diameter) on the lateral side of the breast
- Infection in Armpit in axilla region
- Lump in tissue above the clavicle
- Modular design for simple replacement of skin, cyst, lump axillary gland
- Skin detaches for replacing cysts
- Realistic tactile feel
- Easy to keep clean

W19340



Nasogastric Intubation



NG Tube Insertion Trainer

Use this economical trainer for instruction of nasogastric tube insertion and care. The oesophagus and stomach reside within the head for ease in storing and transporting to various classrooms or lab tables. The head comes mounted on a flat plate to hold it steady. No moving parts and simple construction assure longevity. The only replacement part is the stomach bag. Clean up is easy and quick.

1017250

Otoscopy Pneumatic



Life/form® Pneumatic Otoscopy Kit

This exciting Pneumatic Otoscopy trainer offers an exciting additional feature for the Life/form® Diagnostic and Procedural Ear Trainer (1017259). While pneumatic otoscopy is indispensable for

examination of the ear, studies have shown that most are performed incorrectly! Now with the valuable feedback offered by this kit, students, residents, and practising physicians can learn how to generate the correct amount of air pressure needed to perform accurate pneumatic otoscopy to test for tympanic membrane mobility.

Kit includes a pneumatic pressure gauge, two pneumatic ears with pressure tubing, and a package of approximately 100 eardrums.

W44748

Cricothyrotomy



Cricothyrotomy Simulator

- Anatomically Correct
- Realistic Appearance
- Replaceable Skin
- Replaceable Trachea

Designed for learning and practising the technique necessary to perform an emergency cricothyrotomy! Paramedics, EMTs, other emergency personnel, anaesthesiologists - all now have the opportunity to perfect this technique. Normally, the availability of cadaver material has determined the degree of procedural practise. Fortunately, this is no longer the case. Cricothyrotomy Simulator now offers the perfect alternative

to cadavers. Palpable landmarks include the cricoid and thyroid cartilage. The prominentia laryngea is prominent on the hyperextended neck. All landmarks are accurately placed and allow for fast action. The "trachea" in this simulator is replaceable as the "airway" passes completely through from top to bottom. This allows checking the stylet and obturator placement once the "stab" has been made. Complete with a full-size neck, ties can be used to hold the obturator in a secure position. Cricothyrotomy Simulator comes complete with six skins, six adult cartilage inserts, six child cartilage inserts, instruction guide, and a durable carrying case.

1017239

Ear Examination



Life/form® Diagnostic and Procedural Ear Trainer

Now with one exciting new trainer, students, residents, and practising physicians can master the skills needed to examine the human ear using visual cues, correctly diagnose common diseases, clean the ear canal, remove a foreign body, and perform a myringotomy with ear tube insertion. The Life/form® Diagnostic and Procedural Ear Trainer is anatomically correct. Lifelike right and left ears teach diagnostic and procedural techniques and are removable for easy maintenance and storage. For the ultimate in realism, the middle ear can be filled with varying fluids. The instructor can control the colour and consistency of the liquids.

Another feature that brings this trainer as close to life as possible is the inclusion of nine diagnostic cartridges with full-colour photo prints illustrating:

- Normal tympanic membrane
- Mucooid otitis media
- Serous otitis media with an air-fluid level

- Chronic otitis media with small and large tympanic membrane perforations
- Two views of attic cholesteatoma
- Atelectatic middle ear otitis
- Tympanic sclerosis

Trainer comes complete with two ears, approximately 100 pre-cut eardrums, specially formulated ear wax, one standard middle ear cartridge with syringe, adjustable stand, and a hard carry case. Otoscope, ventilation tubes, and surgical instruments are not provided.

W44747



Truman Trauma Resuscitation Coach



The Truman Trauma System offers an anatomically correct simulated human torso designed for trainees to practise several surgical procedures together with the renowned AirSim head for training the full range of airway management and resuscitation skills. The Truman Trauma System also allows the use of replaceable tissue sets that allow each learner a lifelike & unique surgical experience.

Skill Development:

1. Chest tube insertion: recognition of correct position, surgical incision, blunt dissection through chest wall, perforation of pleura, and finger sweep
2. Needle Decompression of tension pneumothorax
3. Cardio Pulmonary Resuscitation (CPR)
4. Needle and Surgical Cricothyroidotomy
5. Airway Management Skills including OP and NP airway tube insertion, tracheal intubation, bag valve mask techniques, supraglottic airway insertion and ventilation
6. Percutaneous Tracheostomy
7. Identification of tracheal deviation and jugular vein distension which are warning signs attributed to tension pneumothorax

Features:

Chest Tube Insertion:

1. Anatomically accurate chest tube insertion in the 5th intercostal space
2. Three layered tissue representing skin, fat tissue and muscle for “real feel” surgical incision
3. Realistic feel of all thoracic palpable landmarks
4. Cavity for introduction of optional liquids for simulation of haemothorax or pleural effusion

Cardio Pulmonary Resuscitation:

1. Realistic chest structure allows for easy identification of all anatomical landmarks
2. Full head tilt, chin lift and jaw thrust capabilities to allow the students to prepare the airway prior to resuscitation
3. Lifelike recoil during compressions
4. Successful ventilation will provide an accurate representation of chest rise and fall

Airway Management Skills:

1. Anatomically accurate oral and naso pharyngeal AirSim airway
2. Larynx piece with palpable tracheal rings for both surgical and needle Cricothyroidotomy and percutaneous tracheostomy
3. Full use of supraglottic devices
4. Endo-tracheal tube insertion with direct laryngoscopy
5. Effective bag mask ventilation
6. Single lung isolation capabilities



Needle Decompression:

1. Option to introduce air to create either right or left tension pneumothorax
2. Needle decompression replacement tissue sets located in the 2nd intercostal space at mid clavicular line
3. Successful needle insertion will release air with the familiar “hiss” sound

Tracheal Deviation and Jugular Vein Distension:

1. Jugular vein distension can be observed on either the left or right side of the neck during tension pneumothorax
2. Tracheal deviation can be palpitated and clearly visible moving away from the side that has tension pneumothorax
3. Both features revert back to neutral upon successful needle decompression

Product Components:

1. Truman Trauma model
2. Replaceable Tissues (1 set for needle decompression and 1 set for chest tube insertion already attached)
3. 1 Combo larynx piece (Crico and Traci)
4. 1 overlay neck skin attached and (2 spare)
5. 1 roll of sealing tape
6. 1 bottle of Trucorp lubrication
7. User's Guide/Instructor's Guide
8. Black Carrying Case

1017521





3B Scientific® ORTHObones™ - Premium Class Artificial Bones

Thanks to the recently developed 3B Scientific® ORTHObones™, surgeons, orthopaedists and medical engineers will have an artificial bone that perfectly resembles a genuine human bone in terms of form and qualities. Renowned facilities have confirmed the excellent mechanical characteristics of the 3B Scientific® ORTHObones™. The key to the impressive realism lies in the two part construction.

3B Scientific® ORTHObones™ are made by an innovative production process, using a special mix of synthetic materials.

The Advantages of 3B Scientific® ORTHObones™

As a surgeon or orthopaedist, the 3B Scientific® ORTHObones™ will enable you to optimise your skills. Practise new techniques to perfection, and regularly test your ability to carry out common movements. Regardless of whether you specialise in fractures of arms and legs, jaw surgery or pelvic implants: within the 3B Scientific® ORTHObones™ range, you will find a value for money, and an anatomically correct practise environment at your disposal. You will be perfectly prepared for treating your patients!

Femur



3B Scientific® ORTHObones™ Femur features compact cortical bone and softer, sponge-like cancellous bone.

W19121 (right)
W19128 (left)



A cross section through the metaphysis and the epiphysis shows the hard, compact cortical bone, the soft cancellous bone and the medullary cavity.



Transverse section through the diaphysis of the femur.

Humerus



3B Scientific® ORTHObones™ Humerus

W19125 (right)
W19130 (left)

Ulna



3B Scientific® ORTHObones™ Ulna

W19127 (right)
W19132 (left)

Half Pelvis



3B Scientific® ORTHObones™ Half Pelvis
W19123 (right).....
W19133 (left).....

Lower Jaw



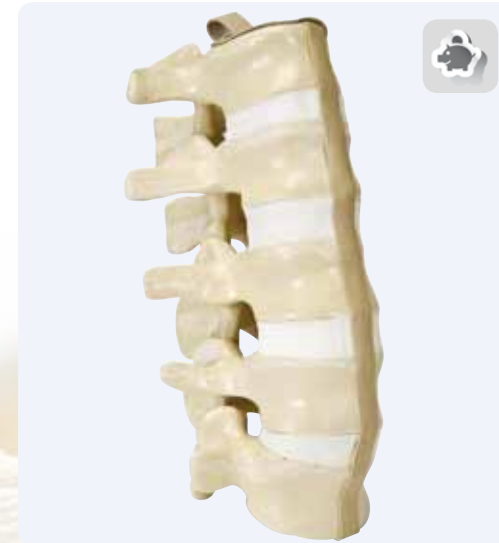
3B Scientific® ORTHObones™ Lower Jaw
with Teeth
W19120.....

Sacrum



3B Scientific® ORTHObones™ Sacrum is made of a compact and resistant material.
W19124.....

Lumbar Vertebra



3B Scientific® ORTHObones™ Lumbar Vertebra
with intervertebral Disc
1017583.....

Manufacturers of medical implants, endoprotheses and similar products equally take advantage in different ways of 3B Scientific® ORTHObones™. First, you can test and optimise your products during the development phase, at low cost. Second, the 3B Scientific® OrthoBones™ will be of great benefit in workshops and for presentations. Those interested will learn how your products behave in realistic conditions and get a feel for the application.

3B Scientific® OrthoBones™ feature:

- high product quality
- realistic mechanical characteristics
- exceptional value for money



15%
ORTHObones™
INTRODUCTORY OFFER
for your first order
 We will be pleased to send you a free sample with no postage costs.
 You can obtain further information from our customer service department.

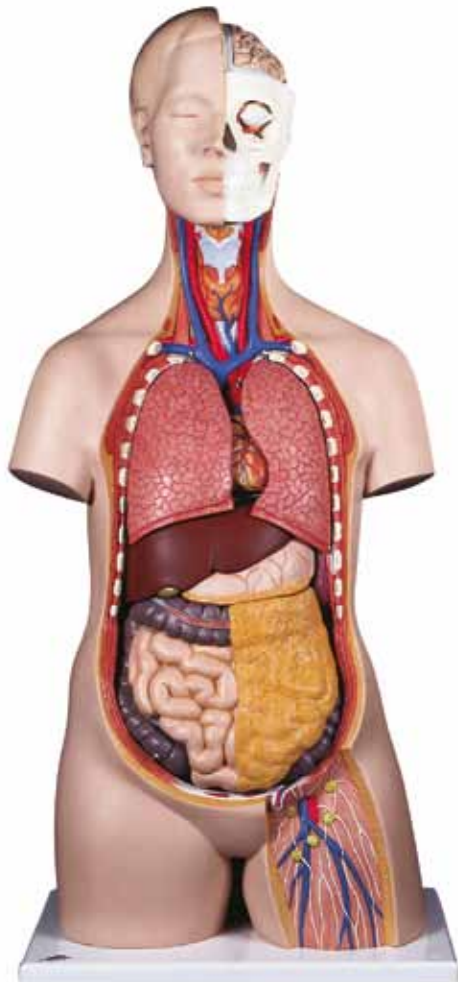
Torso 12 Part, B09

Classic Unisex Torso, 12 Part

The following components of this torso are removable: 2 part head, 2 part removable heart, 2 lungs, stomach, liver with gall bladder, 2 part intestinal tract, front half of kidney

Supplied with 3B Torso Guide.
87x38x25 cm; 4.6 kg

B09



Beauchene Skull, 22 Part, A291



3B Scientific® Beauchene Skull, 22 Part, Didactic Coloured Version

This high quality natural cast made of durable, dimensionally stable plastic reveals the complex structure of the human skull in an exceptionally clear way. The 22 individual bones can be firmly and precisely assembled at the well defined skull sutures using robust inconspicuous connectors. This means that the skull can be handled without falling apart, which differentiates it from alternative wobbly models with magnetic connectors. The perfectly interlocked sutures illustrate the adhesion of a genuine human skull very realistically. The bones are didactically dyed in nine lasting colours for ease of identifying the various skull sections. Pairs of bone plates are the same colour.

This popular model is produced using accurate casts of the individual bones of a genuine "exploded" skull of European origin and is ideally suited for training osteopaths as well as other professionals.
21x14x16 cm; 0.7 kg

A291

Ear 4 Part, E10



Ear, 3 Times Life Size, 4 Part

Representation of outer, middle and inner ear. Removable eardrum with hammer, anvil and stirrup as well as 2 part labyrinth with cochlea and auditory / balance nerve. On base.

34x16x19 cm; 1.25 kg

E10

Heart 2 Part, G08



Classic Heart, 2 part

Highly detailed 2 part heart at a price you will love. The front heart wall is detachable to reveal the chambers and valves inside. Just slightly smaller than life size with exquisite detail throughout. On stand.

G08

Eye 8 Part, F10



Eye, 5 times full size, 6 part

Removable parts include: Upper half of the sclera with cornea and eye muscle attachments, both halves of the choroid with iris and retina, Lens, Vitreous humour.

F10

Breast Self Examination L51



Wearable Breast Self Examination Model

Demonstrate realistic self examination with our natural casting of a female upper body with medium sized breasts. It can easily be worn, in order to better train and practise breast self examination.

- Made of new 3B SKINlike™ high quality silicone
- Displays the skin in finest detail
- Very realistic to the touch and dermatologically tested
- Breast examination is possible in both upright or lying positions
- Benign and malignant tumours in different stages of development hone self-examination skills
 - 2 benign tumours
 - 4 malignant tumours
 - 2 typical anomalies
- Includes "Female Breast" chart
- Supplied with talcum powder, harness, stand and aluminium carrying case

L51

Patient Care Manikin P10



3B Scientific® Patient Care Manikin, I

The only manikin you need to teach and practise. Our best selling patient care simulator allows practice of most training applications from basic to advanced nursing, clinical and emergency training. Made of durable, unbreakable, water-resistant plastics, it is also flexible, allowing natural movement of the arms, legs and joints. Our unique flexible waist design allows the manikin to sit upright for added realism. Lungs, heart, stomach, bladder and intestinal section are removable and fitted with drainage seals for easy cleaning. Bladder and intestinal section are absolutely watertight and connected to the external genitalia to allow catheterisation. All standard injection sites have special injection pads (6 in all) which allow repeated injections and years of use. Also included is an amputation stump to practise dressing techniques. To complete this deluxe manikin, we've included an intestine tube, catheter, duodenal probe, talcum powder, vaseline and lubricant.

.....

P10



BLS “Basic Billy” for real life training, P72



- Compact and easy to carry
- Accurate training exercises thanks to optimal strength and compression values
- Meets the latest AHA (American Heart Association) and ERC (European Resuscitation Council) guidelines
- Hygienic to use

These and other benefits make Basic Billy an excellent Basic Life Support Simulator for both medical training as well as for first aid courses in schools and associations.

P72.....

**The “Basic Billy” demonstration video can be found at:
www.3bscientific.com**

