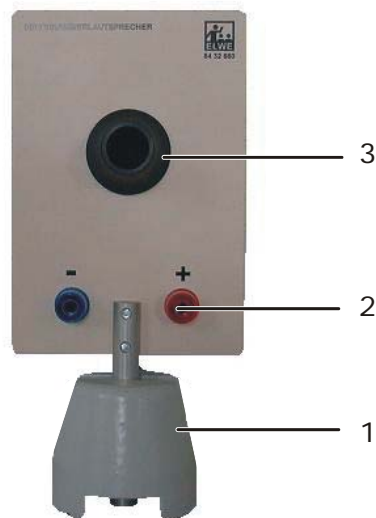


## Horn speaker U8432680

### Instruction sheet

04/09 SP



- 1 Stand base (not included)
- 2 4-mm safety socket
- 3 Speaker outlet

### 1. Description

This horn loudspeaker can be used to approximate a point source of sound and is better suited for acoustic experiments than large conventional box loudspeakers. For excitation of a Kundt tube, the outlet of the speaker can be directly placed at the end of the tube. For the Chladni patterns, it can be positioned under the Chladni plate.

The dynamic excitation system of the speaker has thermal excess current protection.

### 2. Technical data

Frequency range:	300 Hz...10 kHz
Power rating:	8 W
Impedance:	8 Ω
Stem diameter:	10 mm
Weight:	470 g approx.

### 3. Sample experiments

#### 3.1 Kundt's tube

Recommended accessories:

1 Power function generator	U8533510 or
1 Sine wave generator	U8533550
1 Transformer	U8475430
1 Stand base	U8611210
1 Kundt's tube	U8432845

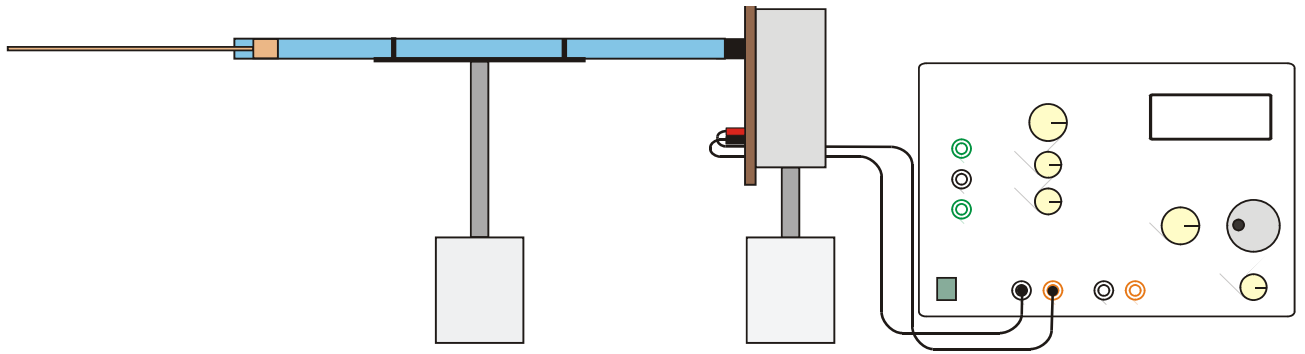


Fig. 1 Experiment set-up for Kundt's tube

### 3.2 Chladni patterns

Recommended accessories:

1 Sine wave generator	U8533550
1 Transformer	U8475430
1 Stand base	U8611210
1 Chladni plate, square	U56006
or	
1 Chladni plate, circular	U56005

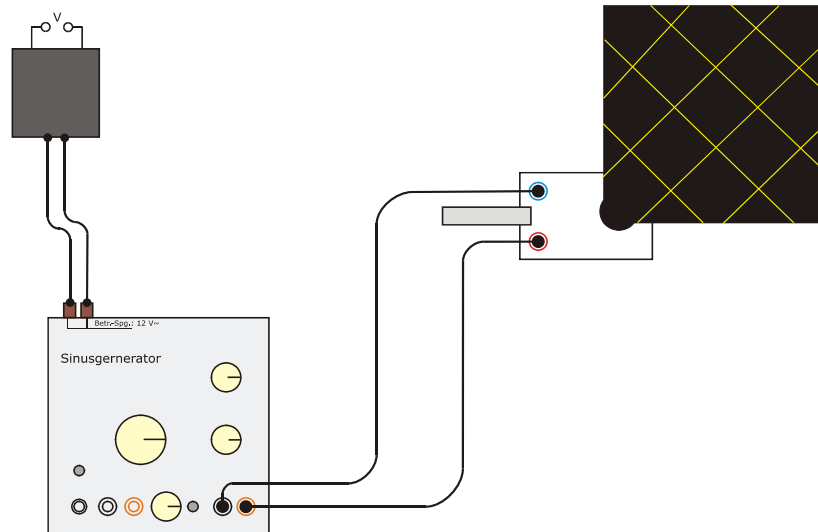


Fig. 2 Experiment set-up for Chladni plate