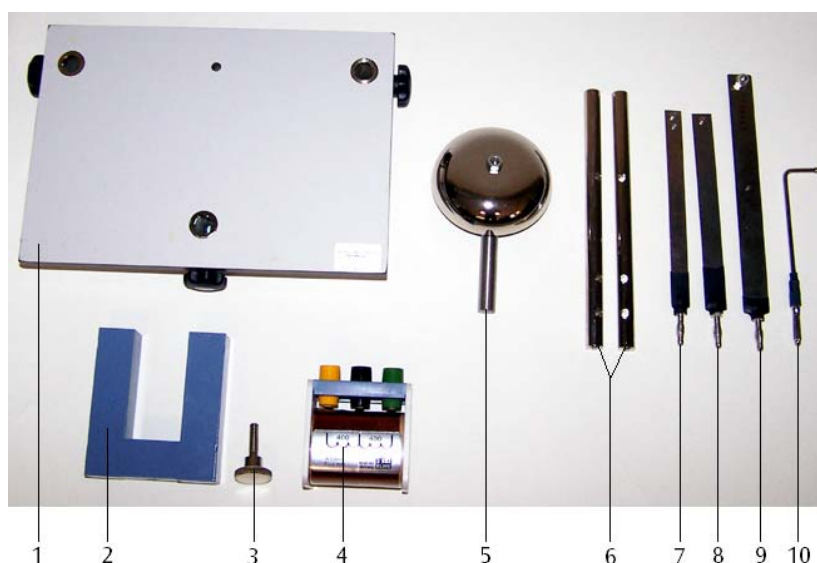


Assembly Kit “Bell, Relay and Bimetallic Switch” U8497700

Instruction Sheet

06/08 SP/ALF



- 1 Base plate
- 2 U-core
- 3 Fixing screw for U-core
- 4 Coil
- 5 Bell
- 6 Contact rods
- 7 Bimetallic strip
- 8 Armature
- 9 Leaf spring
- 10 Contact pin

1. Description

The bell, relay and bimetallic switch assembly kit is used to construct different types of electromagnetic switches and bimetallic strip switches.

3. Technical data

Base plate dimensions: 200×140×40 mm³ approx.
Weight: 1.6 kg approx.

2. Equipment supplied

1 Base-plate with three fixing positions
1 Bell, 70 mm diameter
2 Contact rods, each with three 4 mm holes
1 Leaf spring with plug
1 Bimetallic strip with plug
1 Armature with plug
1 Contact pin with plug
1 U-core, 20 × 20 mm²
1 Fixing screw for U-core
1 Coil, 800 turns.

4. Example switch assemblies

To assemble the switches the following additional equipment is needed:

1 Transformer with rectifier (230 V, 50/60 Hz)
U33300-230
or
1 Transformer with rectifier (115 V, 50/60 Hz)
U33300-115
1 Lamp socket E14 U8495320
1 Filament lamp, 12 V, 25 W, E14, as typical consumer item

4.1 Assembly of a bell circuit

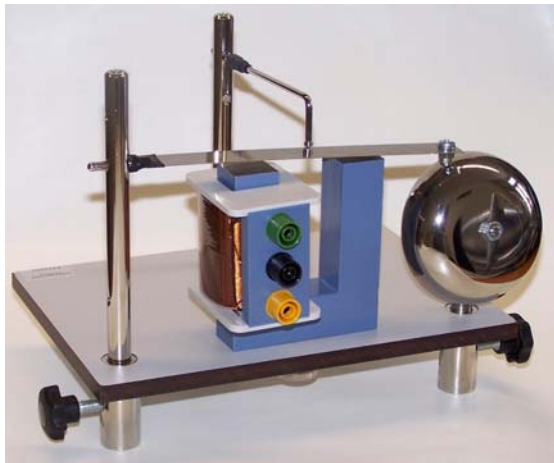


Fig 1 Assembly of a bell circuit

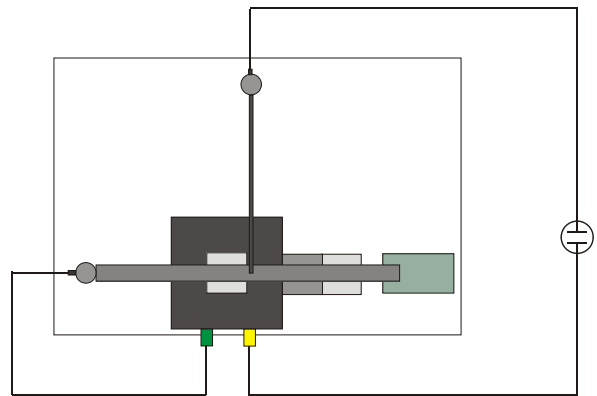


Fig. 2 Circuit diagram for a bell

4.2 Assembly of a relay

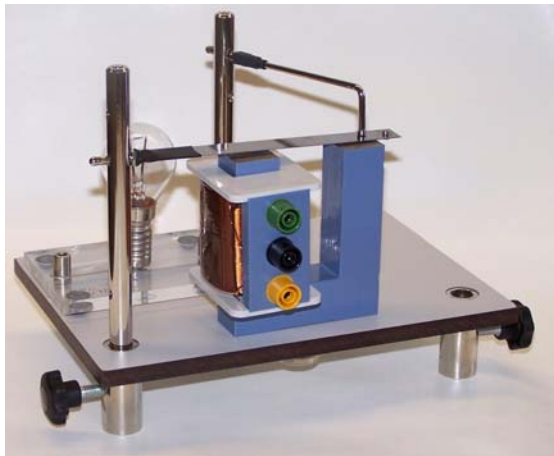


Fig 3 Assembly of a relay

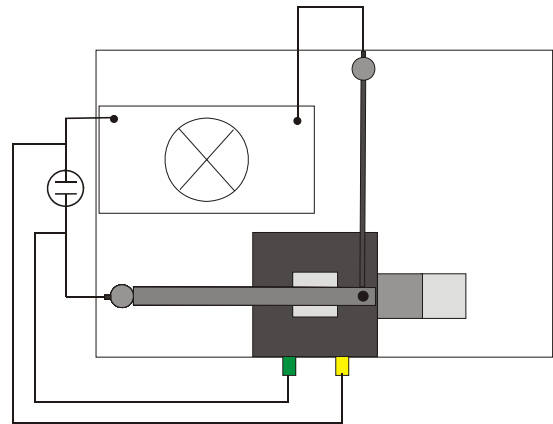


Fig. 4 Circuit diagram for a relay

4.3 Assembly of a bimetallic switch circuit



Fig. 5 Assembly of a bimetallic switch circuit

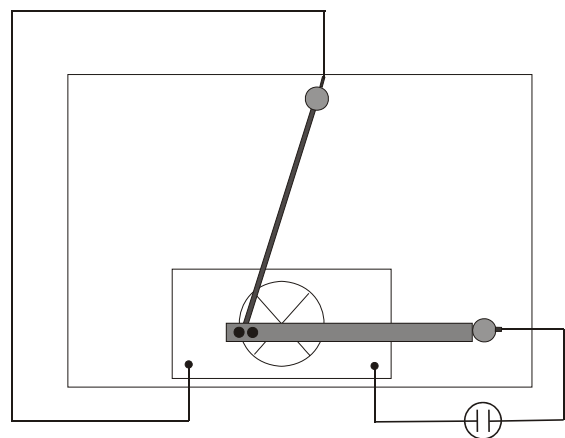


Fig. 6 Circuit diagram for a bimetallic switch